

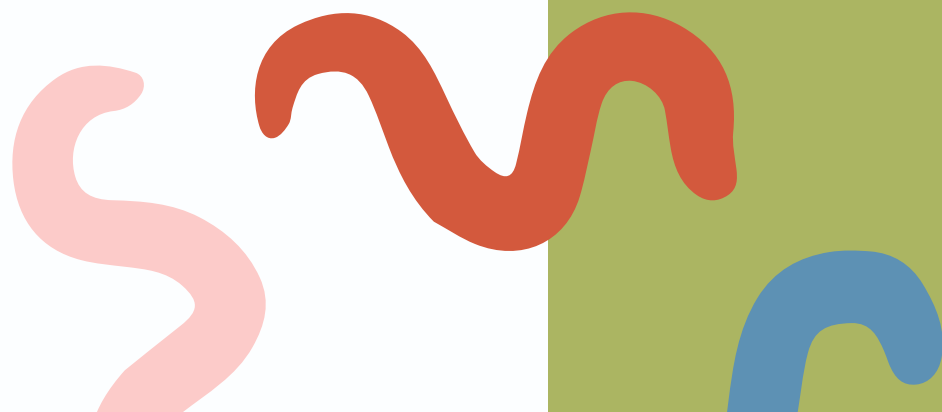


GARDEN OF GROWTH

LIEPAJA, LATVIA 3.-9.06.2023.



Co-funded by the
Erasmus+ Programme
of the European Union



AIMS



1

to explore how green urban spaces, such as community gardens, can be used in the field of youth work;

2

to explore and develop new methods of youth active participation, such as inclusive decision making and more;



Host of this training course is
Latvian environmental and
educational association RADI VIDI
PATS (RVP).

Our aim is to support the creation
of a more sustainable, inclusive
and participatory society with the
resources we are given.

For assistance and more
information about the training
course contact coordinator of this
project:

Linda Ulane

linda@radividipats.lv

+371 25985455

(also on Telegram and Whatsapp)

REFUSE,
REDUCE, REUSE, RECYCLE, REPAIR



Linda Ulane is a project coordinator in RVP. She also works as NFE trainer for Latvian National Agency and also in adult education. Mostly she covers topics of support system for youngsters, self exploration and the importance of creativity. Linda is also a poet and short prose writer and she volunteers in Liepaja prison where she facilitates creative writing and bibliotherapy workshops. She also works as Dr. Clown (therapeutical clowning) in children hospital.

FACILITATORS

Stanislav Babins is non-formal education trainer and project manager from Liepaja, Latvia. Working for RVP and The Latvian Agency for International Youth Programs. He regularly delivers trainings on national and international level on topics of active participation, volunteering, social inclusion and peace culture, environment and sustainability.



Some cool facts



All of us have faced situations where we go through amazing learning experiences but often somehow they don't get realised outside the mobility.

Therefore "Garden of Growth" is designed in a way to support the implementation of the new, healthy practices you might learn. That is why there will be organised online meetings before and also after the mobility to support not only your follow up activities but also your personal learning path.



We will have environmentally friendly vegetarian meals

We will have a lot of hands-on experiences in a real urban community garden.



Liepaja is going to be the European capital of Culture 2027. There are things to see!

What to pack?

- Reusable water bottle;
- Clothes for working in garden;
- Somthing to sit on the ground outdoors;
- Comfortable shoes for moving and walking;
- Swimming suit and towel;
- Questions and ideas;
- Some healthy, preferably zero-waste snack from your culture for tea breaks (we won't have obligatory international evenings);
- Participatory mood.



The venue - Fontaine Valhalla hotel and garden

Participants will live in a very cute hotel in Liepaja center. It is close to basically everything - the community garden, RVP office, the sea. People will share rooms. Breakfast will be self-service.



Most of our sessions will take place in Liepaja community garden that is just next doors of Radi Vidi Pats office. There is also plan B for rainy days, but be prepare to be outside!



Travel



This project is possible thanks to financial support from the Erasmus+ Youth Programme. Costs for accommodation, food and activities during the training course will be covered from the project budget. There is no participation fee.

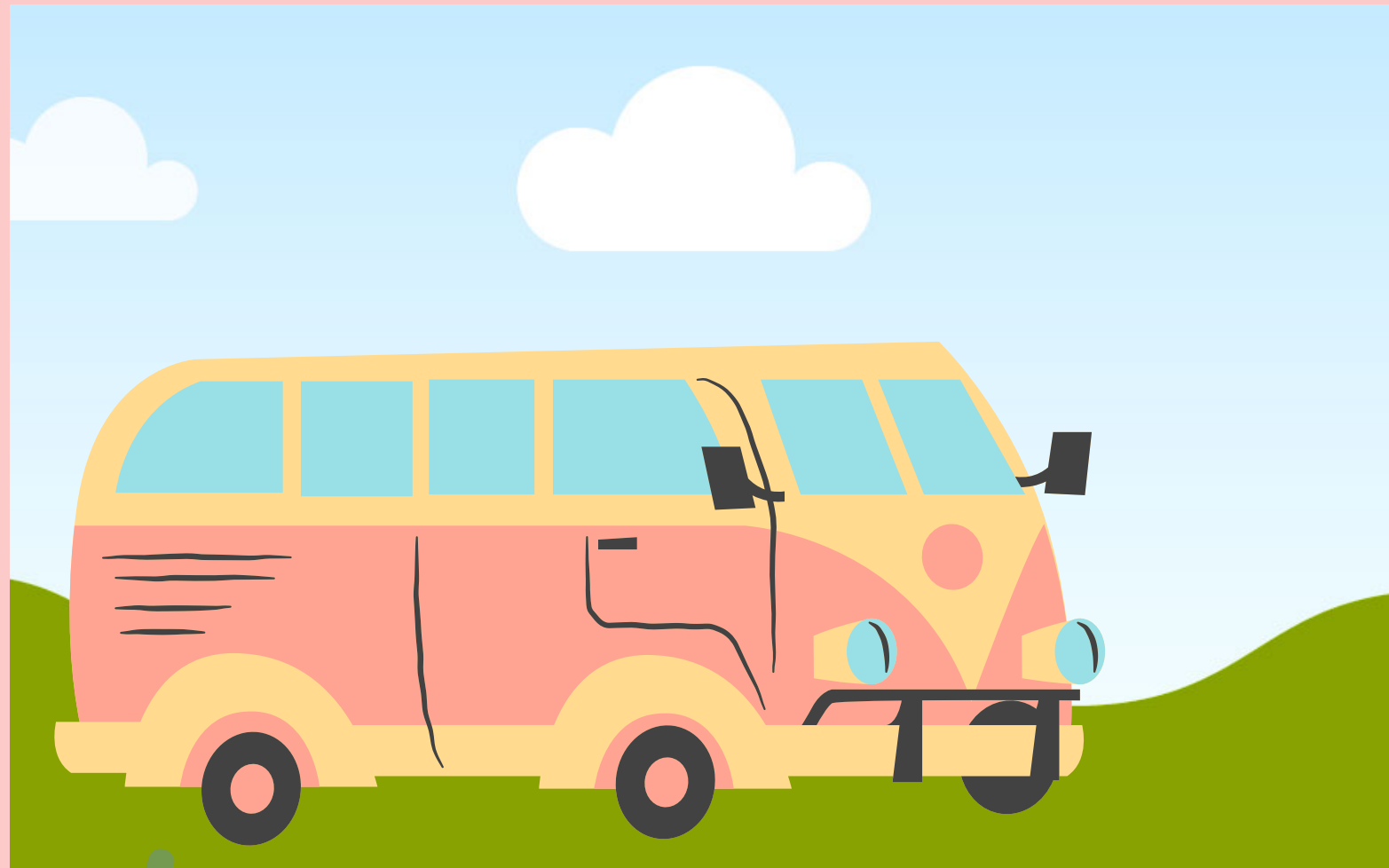
As for travel we always suggest to travel overland, especially from the nearest countries. Nevertheless, we understand that for some countries it is impossible.

The best airport to arrive is Riga airport. Make sure you arrive before 17:00 on 2nd of Jun to manange to catch a bus to Liepaja. Departure plane should be after 12:00 on 10th of Jun. From Riga to Liepaja there are regular buses. More info will follow closer to project dates.

DO NOT BUY TICKETS BEFORE CHECKING THEM WITH US!

If you want you can arrive a few days earlier and leave a few days later, but the hosting costs won't be covered by the project.

Travel reimbursement



All the tickets will be reimbursed after you deliver us the original tickets (the ones that are in paper and digital) AND report about follow-up event, not later than 31st of August, 2023. This event should be experience sharing event for other people who work with youth, community building etc.

2023 according to the E+ financial guidelines: <https://ej.uz/travelcosts>. The amount depends on distance and type of chosen transportation, therefore we will communicate about this with each participant separately.

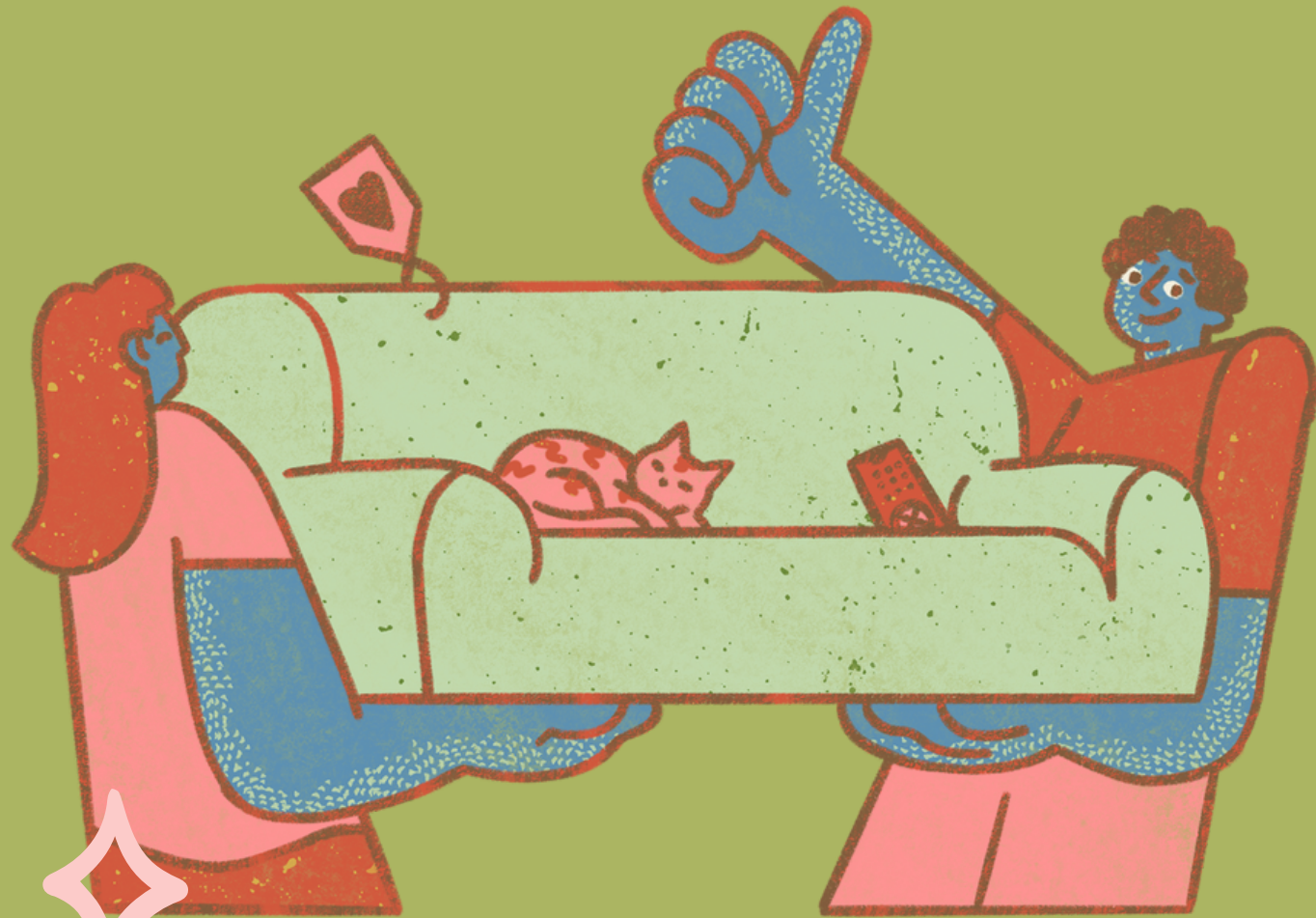
Taxi and first class tickets will not be reimbursed.

Food

We totally respect people's health and life-style choices. Nevertheless, as we are trying to leave as small negative impact on Earth as possible, the meals will be vegetarian by default. If meat is a special need of yours during this one week, please let us know, we will try to do our best to answer your need.



IF YOU CAN'T REDUCE



THEN REUSE

**Thank
you!**

**Any advice on how to improve my
skills of creating visual materials
are welcome! (Linda)**